



Jefferson County  
**PUBLIC LIBRARY**

# REDESIGNING ARVADA LIBRARY

**NAMING  
OPPORTUNITIES**



# LIBRARY ENHANCEMENTS FOR A THRIVING COMMUNITY

Your gift creates meaningful impact and has the power to transform our community. Help drive positive changes in literacy, education, workforce and economic development, digital literacy and lifelong learning.

## **DIRECT INQUIRIES TO:**

Jo Schantz Hall, Jefferson County Library Foundation Executive Director  
10790 W. 50th Ave., Suite 200, Wheat Ridge, CO 80033

**303.403.5075 | [jo@jeffclf.org](mailto:jo@jeffclf.org)**



The beloved Arvada Library has served in the heart of Olde Town Arvada for more than 20 years. And as the community has changed, so have the needs of our Arvada Library patrons and staff. Now, the library will get a much-needed redesign. We heard the community when they said they wanted a vibrant, safe place to enjoy events and library services.

The path to a redesigned library with that extra something special is donors like you. We are fortunate to have taxpayer support for our project and have saved money for this reimagining. However, when we have the additional support of our community, we can go the extra mile. Outdoor spaces, benches, well-equipped meeting rooms and more are possible with additional support from people who are passionate about our library.

We know that people who support their library tend to be people who love their community and want to make sure everyone has access to library materials and resources. We thank you for believing in the Arvada Library and its important role in vibrant Olde Town Arvada.

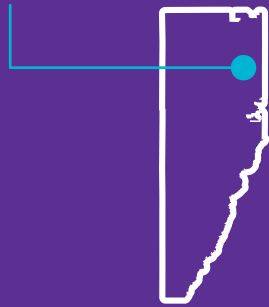
Donna Walker  
JCPL Executive Director

# ARVADA LIBRARY AT A GLANCE

Based on 2024 statistics

LIBRARY  
SERVICE AREA  
POPULATION

**52,016**



**196,635**

ANNUAL  
LIBRARY  
VISITS



ITEMS BORROWED

**182,945**



**759**

MEETING  
ROOM  
USES



**2,866**

STUDY ROOM USES

**14,330**

STORY TIME  
PARTICIPANTS



**2,612**

SUMMER  
CHALLENGE  
PARTICIPANTS

**18,247**

PROGRAM  
ATTENDEES

**761**

LIBRARY  
PROGRAMS





# REIMAGINING AN OLDE TOWN HUB

The Arvada Library opened in its current location in 2006. As we approach the 20th anniversary of its relocation, Jefferson County Public Library (JCPL) is committed to redesigning the space and upgrading facilities and services to better meet the growing needs of the Arvada community. When asked what updates they wanted to see, the answer was loud and clear: more social events and spaces, flexible service offerings and improved facilities and safety measures. The JCPL team heard you, and we're ready to make the vision a reality. This booklet illustrates how we can stretch our budget further and do even more for the Arvada Library with the support of its generous community.

---

## KEY THEMES HEARD DURING COMMUNITY ENGAGEMENT



Provide a library setting for increased community gatherings, social events and networking.



Increase offerings for classes and activities utilizing maker spaces with an abundance of flexibility.



Increase focus on enhancing safety and security measures, particularly addressing the needs of patrons and other community members.



Redesign the Children's Area to enhance current offerings.



Enhance the collection, both quality and diversity, for a variety of user needs and wants.



More / improved parking would make building access more convenient to patrons.

# MAKING THE DREAM A REALITY

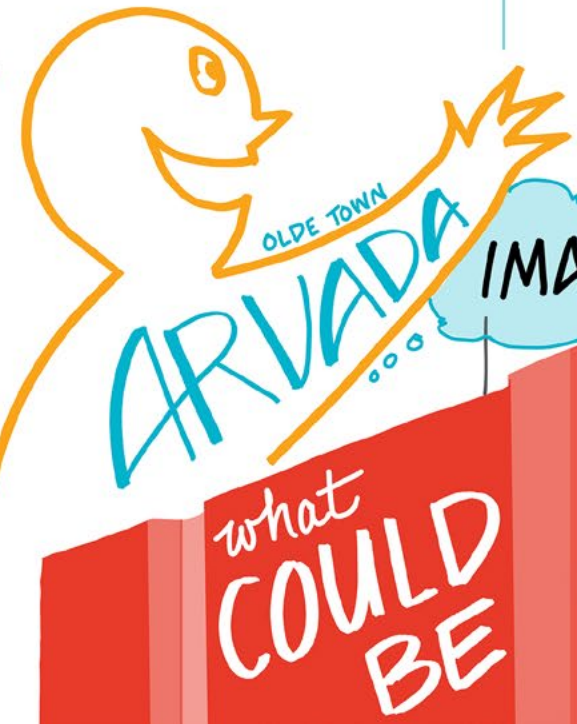
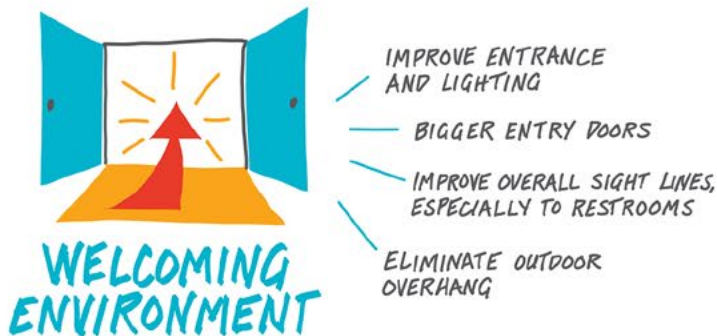
Arvada residents expressed interest in these functional spaces during the community engagement sessions. As we work on the Library's new layout, these will be at the forefront of our architect's design approach.



## SITE



BETTER BIKE & EBIKE PARKING



# SERVICES



- WELCOMING / COLORFUL
- BIGGER DOORS - ADA ACCESS
- POTENTIALLY MOVE ENTRY LOCATION



- MAKER SPACES
- HOBBIES - CLASSES - ART



- SELF CHECK-OUT OPTIONS, INCLUDING SECOND FLOOR
- RELOCATE HOLDS



- UPDATE PHYSICAL COLLECTION
- WIDER RANGE OF OPTIONS
- IMPROVE LAYOUT OF PHYSICAL COLLECTION

# SPACES



- CLEAR SIGHT LINES - EASILY MONITORED
- VARIOUS SIZE STUDY ROOMS



- ADJUSTABLE, COMFORTABLE SEATING
- COMPUTER WORKSTATIONS - WFH SUPPORT
- SEPARATE QUIET AREA



- ENCLOSED AREA
- VARIOUS SEATING FOR KIDS
- INTERACTIVE ACTIVITIES
- LARGE ENOUGH SPACE & STROLLER PARKING



- COZY, COLORFUL ENVIRONMENT
- TRANSITIONAL DESIGN - natural, light
- COZY NOOKS & PRIVATE AREAS



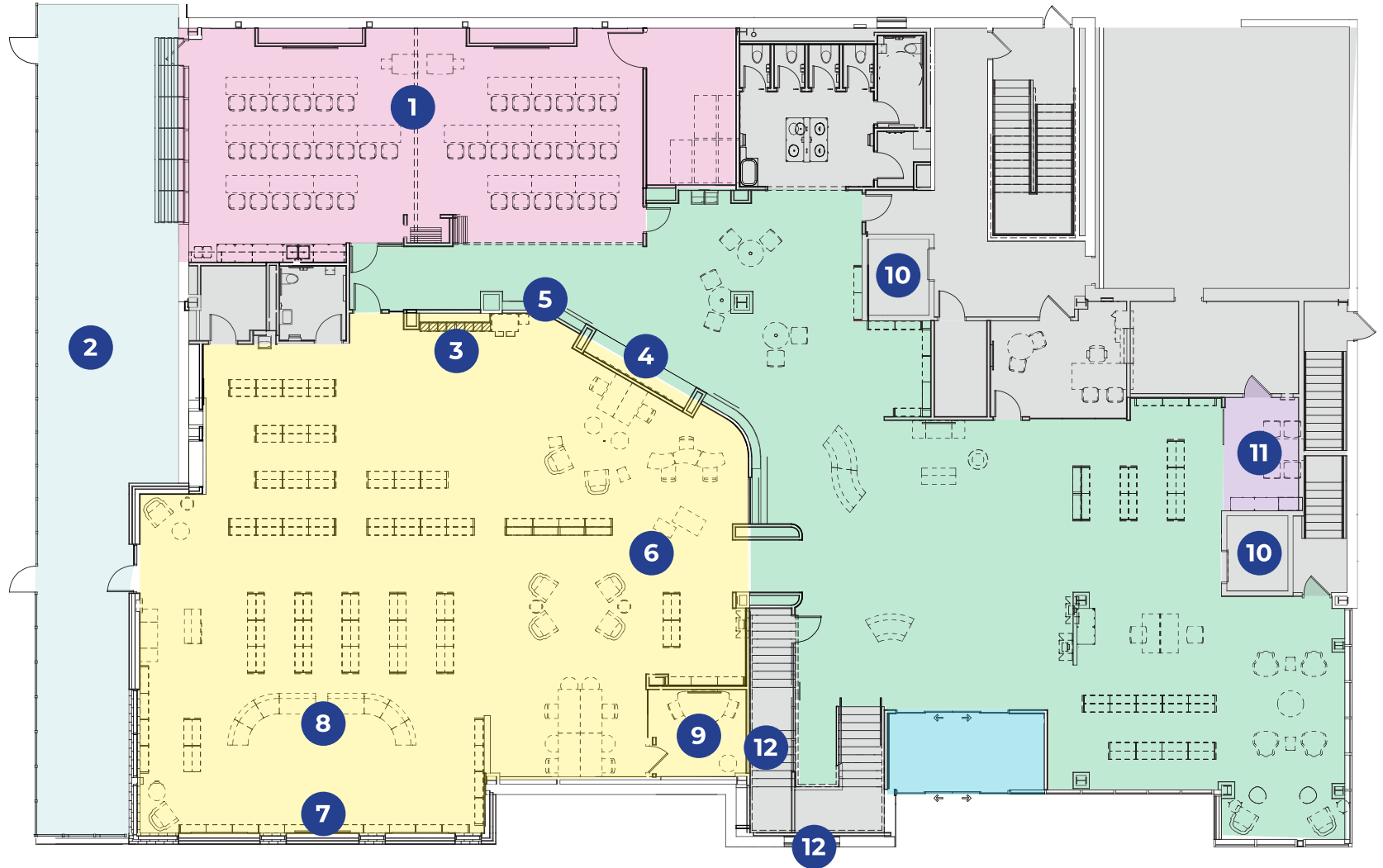
- SOUNDPROOF MEETING ROOMS
- FLEXIBLE MEETING ROOMS
- MAKE ROOMS MORE A PART OF OVERALL LIBRARY



- ENCLOSED AREA
- MORE WORKSPACES
- IMPROVE VISIBILITY, SIGHTLINES



# ARVADA LIBRARY FLOOR PLAN



## LEVEL 1

- |                                  |                             |                                |                                      |
|----------------------------------|-----------------------------|--------------------------------|--------------------------------------|
| <b>1</b> Meeting Room            | <b>4</b> Digital Art Wall   | <b>7</b> Children's Art Wall   | <b>10</b> Elevator Replacement       |
| <b>2</b> Community Outdoor Space | <b>5</b> Community Art Wall | <b>8</b> Story Time Area       | <b>11</b> Community Partnership Area |
| <b>3</b> Family Place            | <b>6</b> Children's Area    | <b>9</b> Children's Study Room | <b>12</b> Decorative Panels          |



**LEVEL 2**

- 13** Teen Area
- 14** Teen Art Wall
- 15** Active Reading Area
- 16** Large Study Room
- 17** Study Rooms
- 18** Tech Access Center
- 19** Create Space
- 20** Quiet Reading Area

# ARVADA LIBRARY NAMING OPPORTUNITIES

Donors are invited to help enhance the new Arvada Library. Naming opportunities are available for areas currently included in the project scope, as well as some unique touches that we can't include without your help.

## **MEETING ROOM \$25,000**

This flexible community meeting room area with increased capacity can be modified to create two smaller meeting rooms as needed. Upgraded technology will accommodate virtual meetings and make this a great place to bring the community together. 10-year gift recognition.

## **COMMUNITY PARTNERSHIP AREA \$5,000**

This space is for community groups and social service organizations to meet one-on-one with patrons to provide services with privacy and dignity. 10-year gift recognition.

## **TEEN AREA \$10,000**

This gives teens an inviting space of their own for individual and group socializing, learning, and use collaborative technology. 10-year gift recognition.



MEETING ROOM AT COLUMBINE LIBRARY



RENDERING OF PROPOSED TEEN AREA AT ARVADA LIBRARY



RENDERING OF PROPOSED CHILDREN'S AREA AT ARVADA LIBRARY



RENDERING OF PROPOSED CHILDREN'S AREA AT ARVADA LIBRARY



RENDERING OF PROPOSED STORY TIME AREA AT ARVADA LIBRARY

## **CHILDREN'S AREA \$25,000**

The Children's Area provides distinct zones for early childhood and school-aged kids and their families to discover and learn together. A gift helps furnish the space with flexible furniture and collaborative opportunities. 10-year gift recognition.

## **FAMILY PLACE EARLY LITERACY SPACE \$30,000**

ALREADY FUNDED

Based on a model of comprehensive family-centered services, this is a destination for young kids and their families to play and learn together, make new connections and receive community support. 10-year gift recognition.

## **STORY TIME AREA \$10,000**

Story Time inspires a love of reading and language while helping with the social developments that get kids ready for school. Parents and caregivers learn how to reinforce early literacy skills at home – all in an atmosphere of imagination. 10-year gift recognition.

## **CHILDREN'S STUDY ROOM \$5,000**

This private study room with collaborative technology is dedicated for student use, tutoring sessions and for caregivers with their kids. Five-year gift recognition.

## **STUDY ROOMS** \$5,000 – \$7,500

Multiple private study rooms are equipped with collaborative technology for study groups, remote workers, small meetings or conversation spaces. Study rooms are designed with a variety of configurations to accommodate two to eight people. Five-year gift recognition.

## **TECHNOLOGY ACCESS CENTER** \$10,000

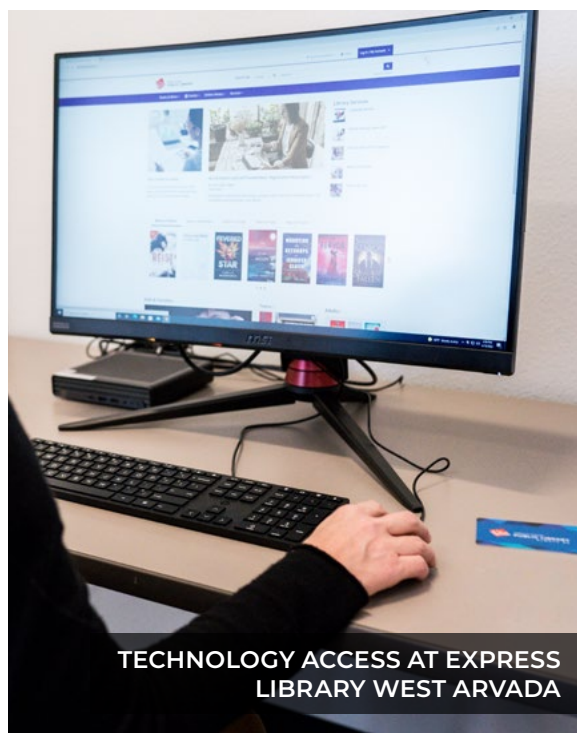
This ADA-accessible area provides access to public computers, laptops and software, as well as technology and tools to support printing, copying, scanning and faxing. This service, along with free Wi-Fi access in our libraries, breaks down barriers of access and provides digital tools to the community. 10-year gift recognition.

## **QUIET READING AREA** \$7,500

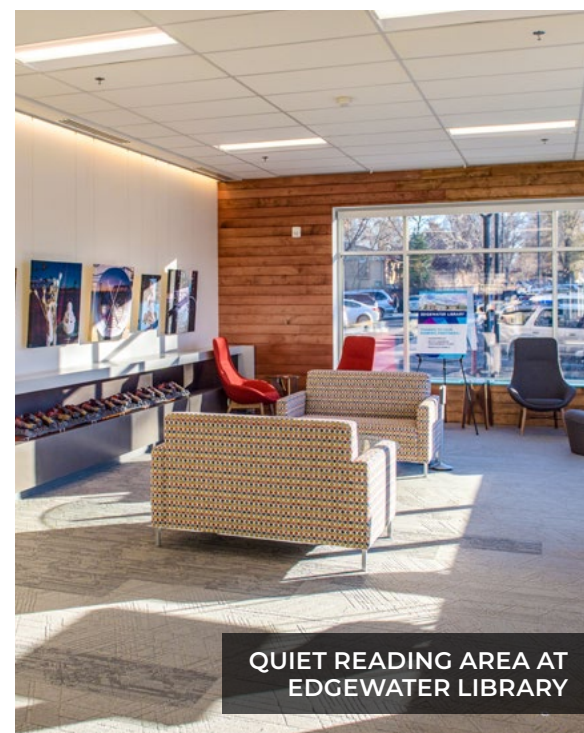
This designated space for reading, study and reflection features comfortable furniture that encourages patrons to quietly work or read, while being near others. 10-year gift recognition.



STUDY ROOM AT EVERGREEN LIBRARY



TECHNOLOGY ACCESS AT EXPRESS LIBRARY WEST ARVADA



QUIET READING AREA AT EDGEWATER LIBRARY



ACTIVE READING AREA AT BELMAR LIBRARY

## **ACTIVE READING AREA \$7,500**

This is a space for patrons to gather and engage in conversation with comfortable and flexible furnishings. 10-year gift recognition.

## **ELEVATOR REPLACEMENT \$50,000**

The two existing elevators will be replaced with new machine room-less traction elevator cars. The new cars will travel at one hundred feet per minute and feature new sills and doors. Finishes within the cab will be modernized with new paneling, trims, hall fixtures and lighting. 10-year gift recognition.

## **THE CREATE SPACE AT ARVADA LIBRARY \$10,000**

The Create Space at Arvada Library is a vibrant, hands-on innovation hub designed to spark creativity, foster entrepreneurship and support lifelong learning. This dynamic makerspace empowers community members of all ages by providing access to cutting-edge technology and expert instruction.

From 3D printing to laser cutting, patrons can explore, invent and bring their ideas to life – regardless of experience level. By reducing barriers to access and offering guided, skill-building opportunities, the Create Space helps bridge the digital divide and cultivates the next generation of creators, makers and problem-solvers. 10-year gift recognition.



CREATE SPACE AT BELMAR LIBRARY

## ART GALLERY WALLS

Each distinct art gallery wall is curated with audience-appropriate art. Five-year gift recognition.

### Children's Art Wall \$3,000

The Children's Art Wall engages and inspires our next generation of creative thinkers and problem solvers.

### Teen Art Wall \$3,000

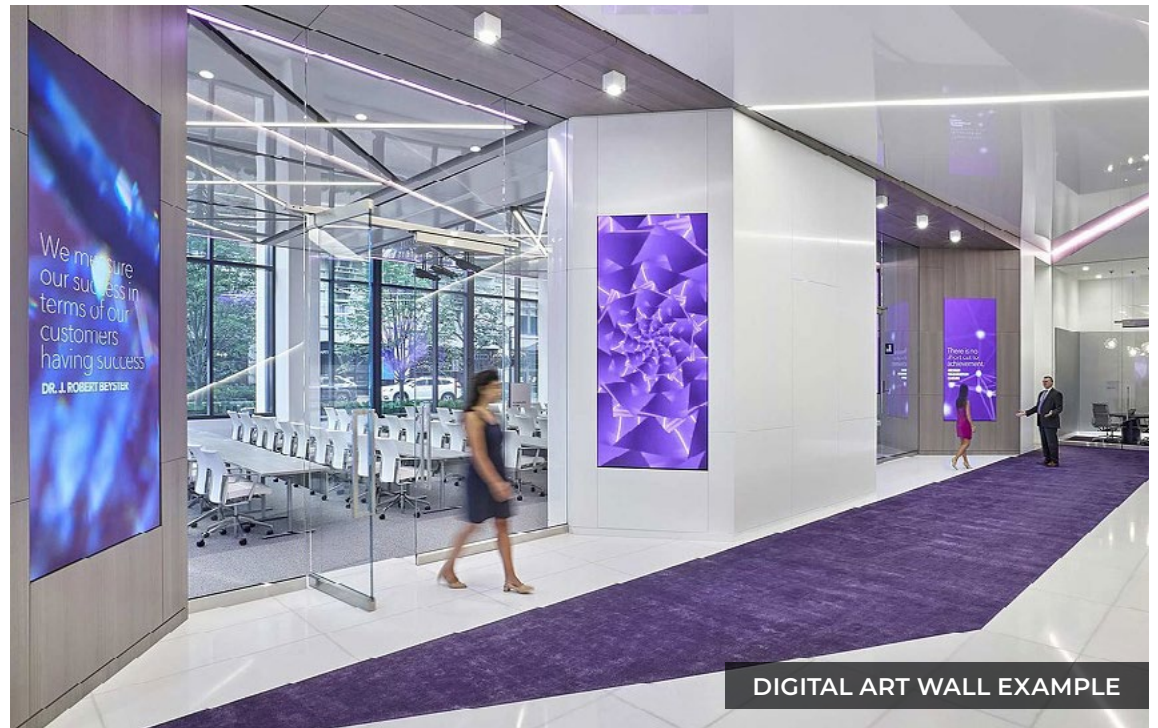
The Teen Art Wall encourages budding artists at an important time in their creative exploration.

### Community Art Wall \$3,000

The Community Art Wall recognizes and celebrates the talent of our region.

## DIGITAL ART WALL \$10,000

The Digital Art Wall will celebrate and elevate local creativity in digital arts, providing multi-sensory, inclusive access to art and educational content. This innovative feature will reinforce the Library's role as a hub for innovation and digital literacy and deliver a visually stunning, "tech wow" experience to delight and inspire! 10-year gift recognition.

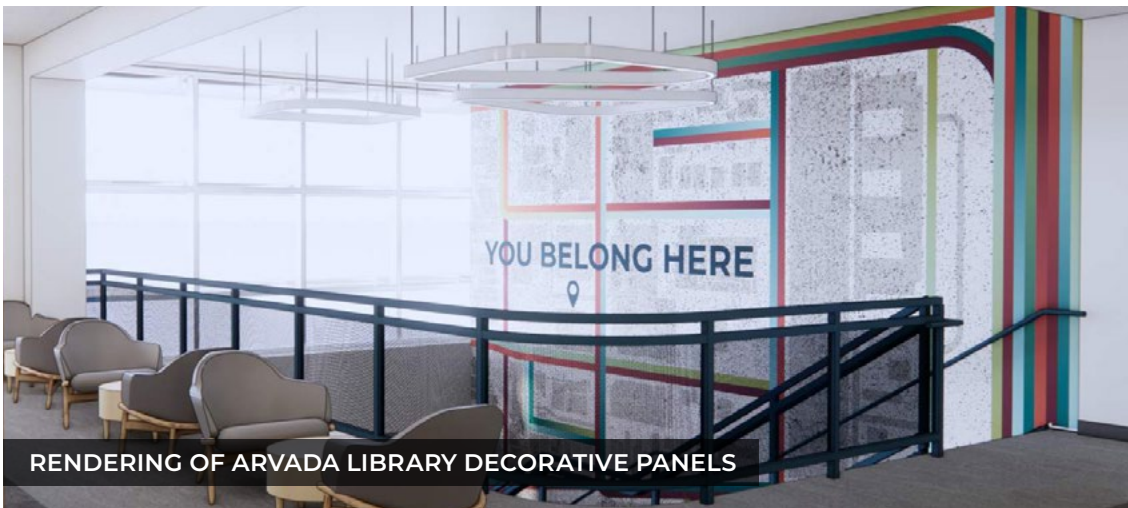




RENDERING OF PROPOSED ARVADA LIBRARY OUTDOOR SPACE

## **COMMUNITY OUTDOOR SPACE \$10,000**

The community outdoor space, including comfortable furniture to help patrons fully enjoy the outdoor space, is a multi-generational opportunity to enjoy fresh air and sunshine in the midst of Olde Town Arvada. Distinct zones encourage kids to engage in unstructured play while others read, chat and gather in a safe and welcoming environment. 10-year gift recognition.



RENDERING OF ARVADA LIBRARY DECORATIVE PANELS

## **DECORATIVE PANELS \$7,500**

Exterior and interior graphic panels at the Library entrance align with the urban feel of Olde Town Arvada. 10-year gift recognition.

## **NOT CURRENTLY FUNDED**

### **Epilog Fusion Edge Laser Cutter \$40,000**

This tool would significantly enhance the Create Space at Arvada Library's advanced laser-cutting capabilities, allowing for more intricate and precise designs, larger-scale projects and increased efficiency. 10-year gift recognition.



EPILOG FUSION EDGE LASER CUTTER

## **GIFTS OF \$1,000 TO \$3,000**

### **Audio Visual Support for Children's Area \$3,000**

A display monitor and system to support Story Times and promote children's programs and activities.

### **Collaborative Technology for Study Room(s) \$2,000**

Display monitors and systems to support shared learning.

### **Public Access Computer(s) \$1,000**

Public access computers for patron use in the adult and teen areas.

### **Children's Computers \$1,000**

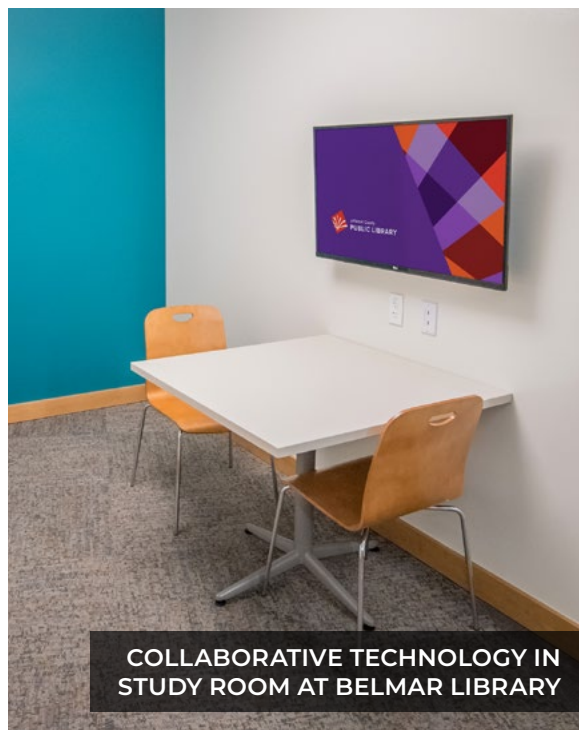
Early Literacy workstations in the Children's area to promote online access to engagement educational content for our youngest patrons.

### **Service Kiosk(s) \$1,000**

Self-service kiosks that enable efficient checkout of Library materials.

### **Bike Racks \$1,000**

Bike racks support active access to the Library with secure spaces for patrons to store their bikes while enjoying programs and services. Five-year gift recognition.



## SMALLER – AND MIGHTY – WAYS TO MAKE AN IMPACT

Though smaller in dollar amounts, modest gifts help us make the library more useful and reach more people. Your gift enhances the quality of our library services, allowing our budget to stretch further and expand the depth and breadth of services we provide.

Individual donations are always welcome. Every dollar helps. Donations ranging from \$100 to \$999 will be recognized on the Arvada Library’s permanent donor sign and in the Library Foundation’s annual report.

## MAKE A GIFT TODAY

The generous support of Jefferson County taxpayers and the fiscal stewardship of our Board of Trustees means we are able to redesign the Arvada Library to meet changing community needs within our existing budget. However, in our community input sessions, we learned the Arvada community has some BIG IDEAS! To provide more of what the community desires, the Library needs additional investment from generous donors. Your support, which will be recognized publicly, will help make the Arvada Library better for all.

---

## INTERESTED IN LEARNING ABOUT GIVING?

Some conversations are best had over a cup of coffee. So, let’s talk. Contact Jo Schantz Hall at 303.403.5075 or [jo@jeffclf.org](mailto:jo@jeffclf.org) to set up a time to discuss the possibilities.

## HOW TO GIVE

Donations can be made online. Simply select **Arvada Library** from the drop-down menu under “Designation” on the donation page.



[COLORADOGIVES.ORG/DONATE/JEFFCOLIBRARY](https://coloradogives.org/donate/jeffcolibrary)

Naming opportunities are governed by Jefferson County Public Library policies and guidelines, subject to approval from the Library Board of Trustees and administered through the Jefferson County Library Foundation. All contributions are tax-deductible.



# JOIN US IN **REDESIGNING ARVADA LIBRARY**

[jeffclf.org](http://jeffclf.org) | [jeffcolibrary.org](http://jeffcolibrary.org)



Jefferson County  
**PUBLIC LIBRARY**