

CONIFER LIBRARY REDESIGN PROJECT UPDATE



Jefferson County
PUBLIC LIBRARY

20 FEBRUARY 2025

SCHEDULE



PROJECT START



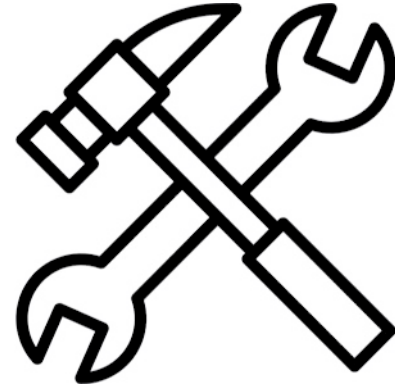
COMMUNITY
ENGAGEMENT



DESIGN &
DOCUMENTATION



PERMITTING



CONSTRUCTION



GRAND OPENING



CURRENT STATUS



RECAP COMMUNITY FEEDBACK



EVERGREEN LIBRARY, EUA

KEY THEMES

1. A place to gather and attend with increased hours of service.
2. Focus on the collection and materials for diverse user needs.
3. Provide services that are accessible to all patrons.
4. Flexibility in collaboration and study, provides acoustic separation.
5. Elevated focus on comfort and wellness for the staff.



EUA

DESIGN MEETS NEEDS

1. Including community gathering spaces with a meeting room, study room, and various collaborative areas throughout the space.
2. Tailoring the collection to the usage.
3. Providing close-in parking and access to the front door on the same level.
4. Including flexible seating for work, study and reading options. Attention to acoustics has been given throughout the library.
5. Including a dedicated staff area and break area.



EVERGREEN LIBRARY, EUA



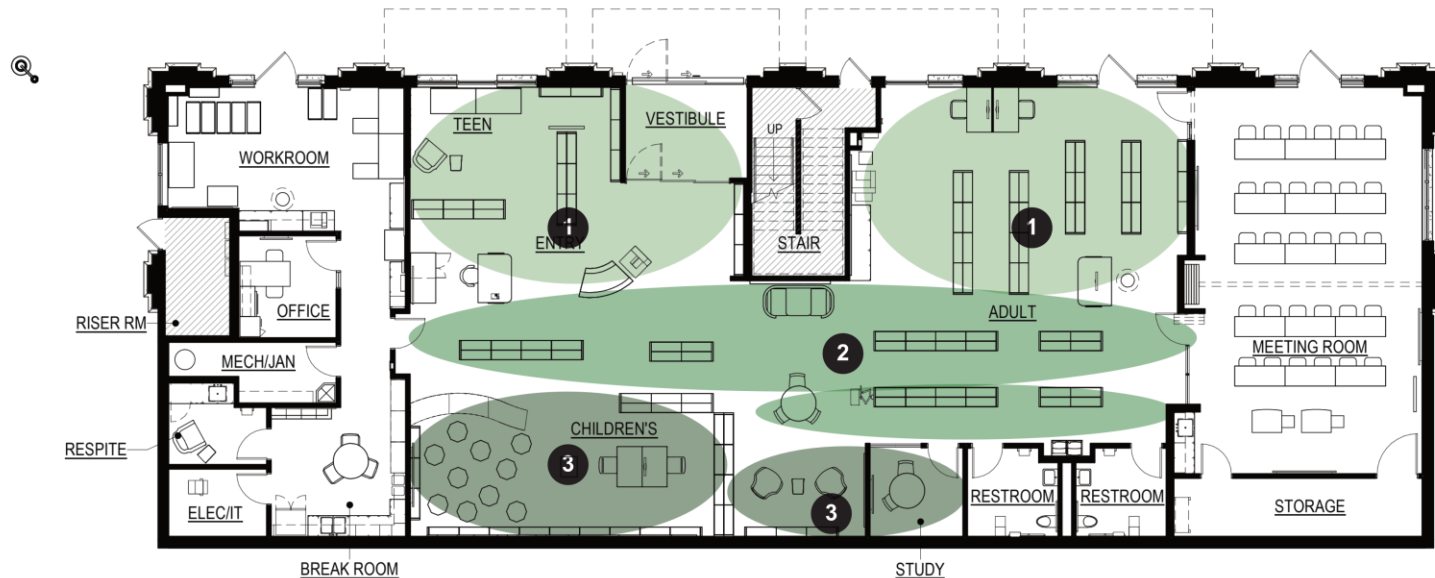
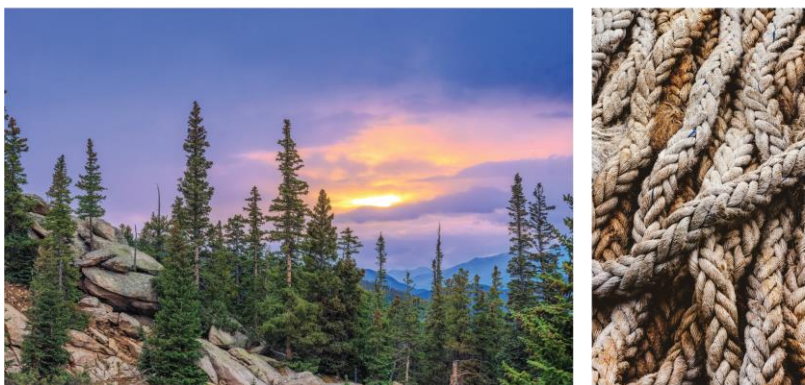
BELMAR LIBRARY, HDR



DESIGN UPDATE

INTO THE FOREST

LAYERED | RICH | TEXTURAL

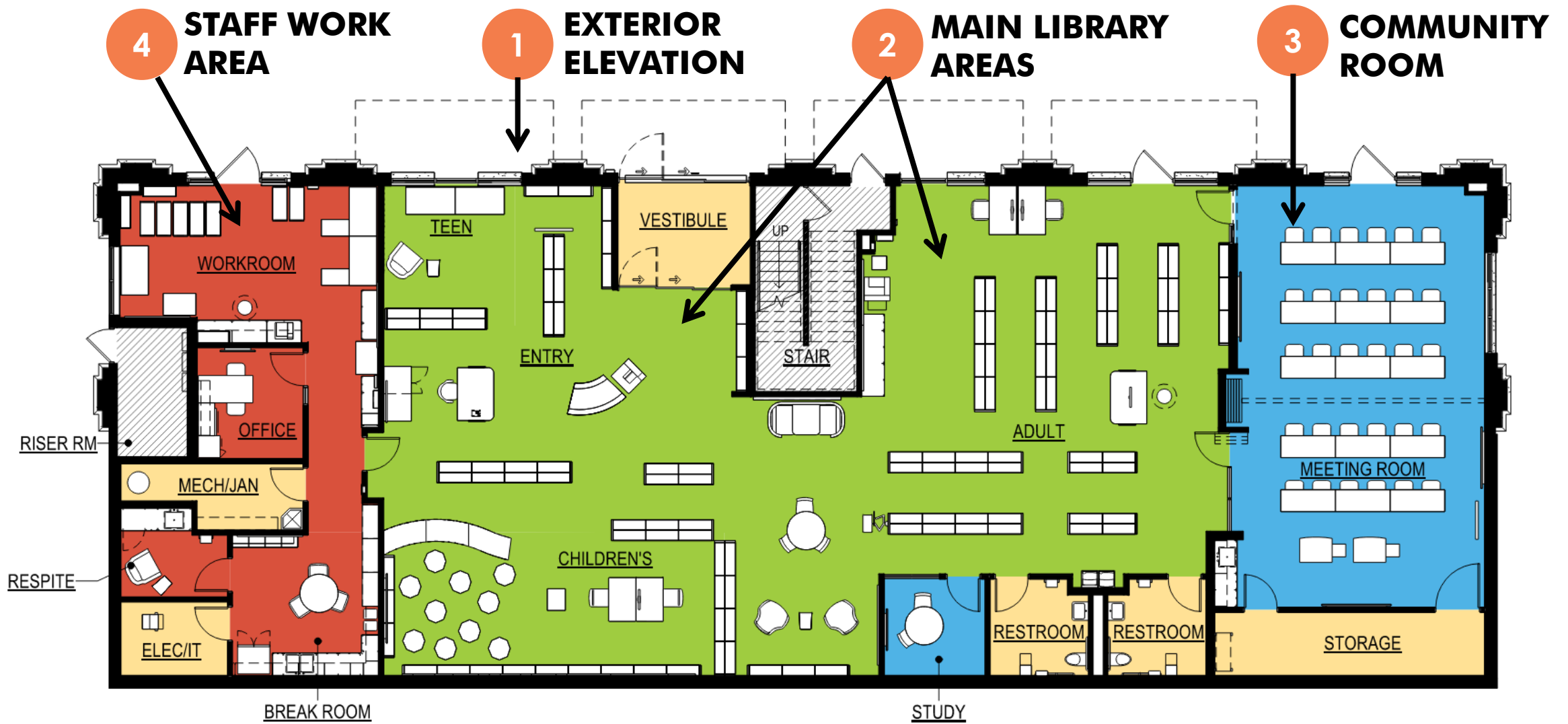


- 1 THE CLEARING**
- BRIGHT & LIGHT
 - MINIMAL USE OF COLOR

- 2 THE TREE LINE**
- TRANSITIONAL SPACE
 - INTRODUCTION OF MORE COLOR ACCENTS

- 3 THE FOREST**
- SATURATED COLOR
 - ADDED TEXTURAL INTEREST

DESIGN CONCEPT / INSPIRATION



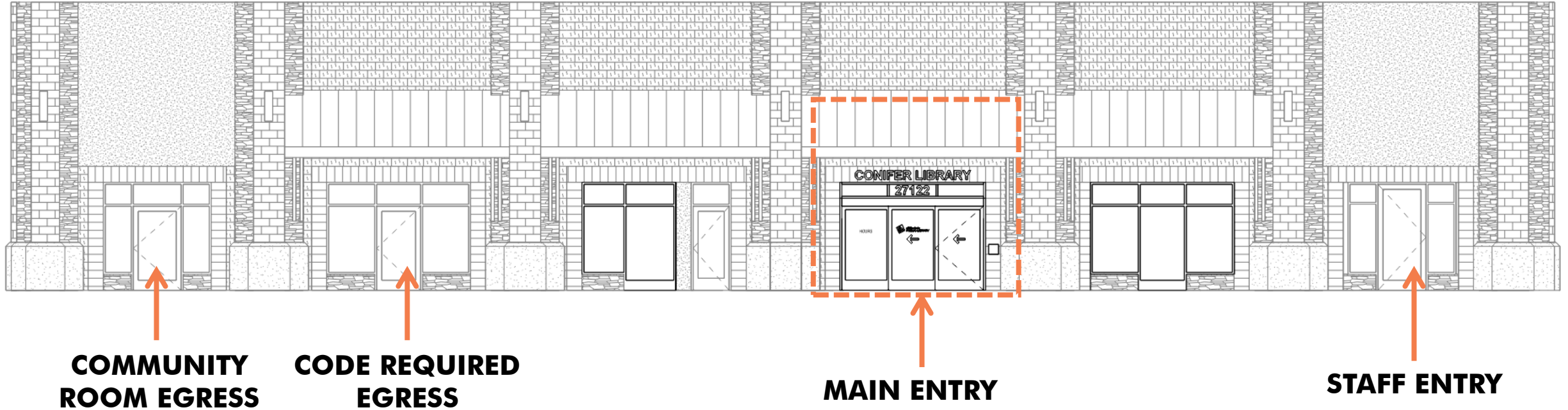
FLOOR PLAN



**REMOVE OLD
SIGNAGE**

**REVIEW TREATMENT
OF NUMEROUS
RETAIL ENTRIES**

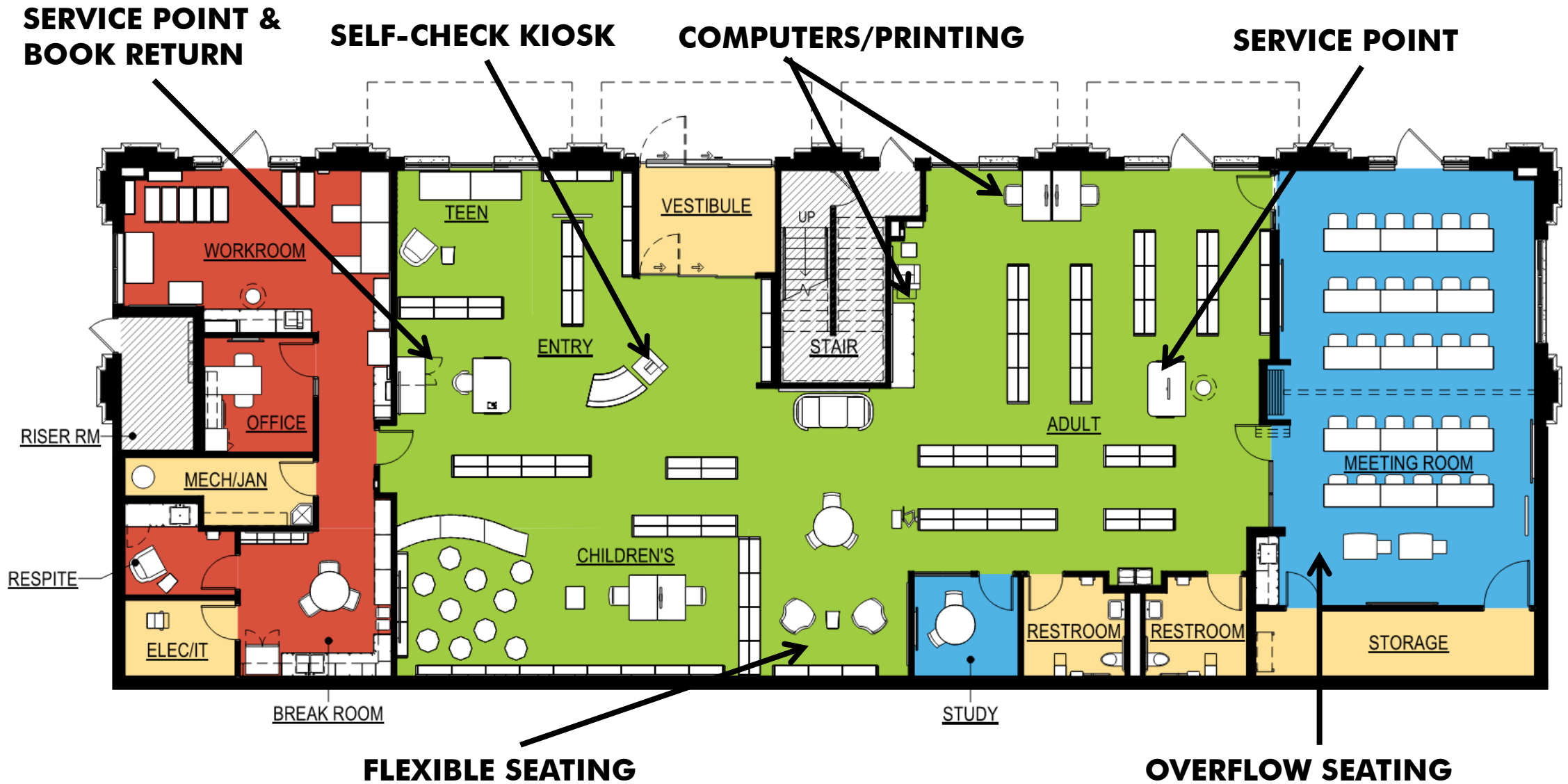
1 | EXISTING STOREFRONT ELEVATION



OTHER FEATURES:

- **NEW LIGHTING AT ALL EXISTING CANOPIES**
- **GRAPHIC WINDOW FILM FOR BRAND IDENTITY & VISUAL INTEREST**

1 | PROPOSED MAIN STOREFRONT ENTRY



2 | INTERIOR ENTRY & MAIN LIBRARY ZONE



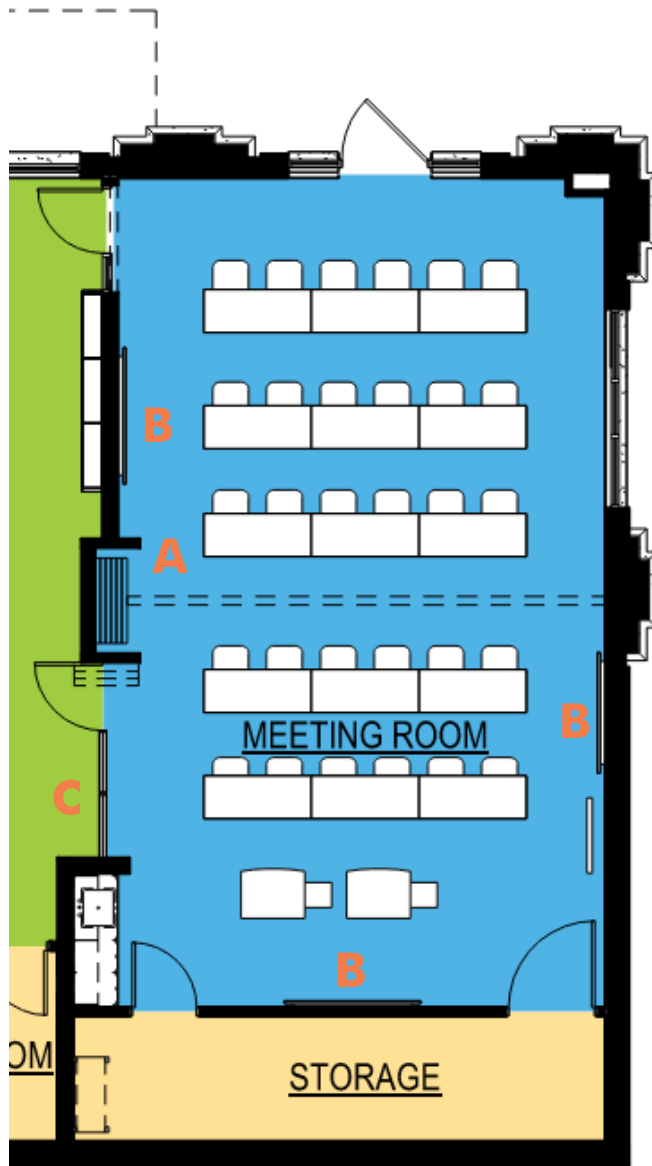
2 | ENTRY & MAIN LIBRARY ZONE



2 | CHILDREN'S & TEEN AREAS



2 | MAIN MOVEMENT AXIS



HIGHLIGHTS

A. Divisible Space

- Capacity for 25-30 patrons in combined state
- Capacity for 12-18 patrons when divided

B. Ample Technology

- Video displays on (3) walls – work in multiple configurations
- Ceiling cord reels for ample convenience power

C. Connection to Library

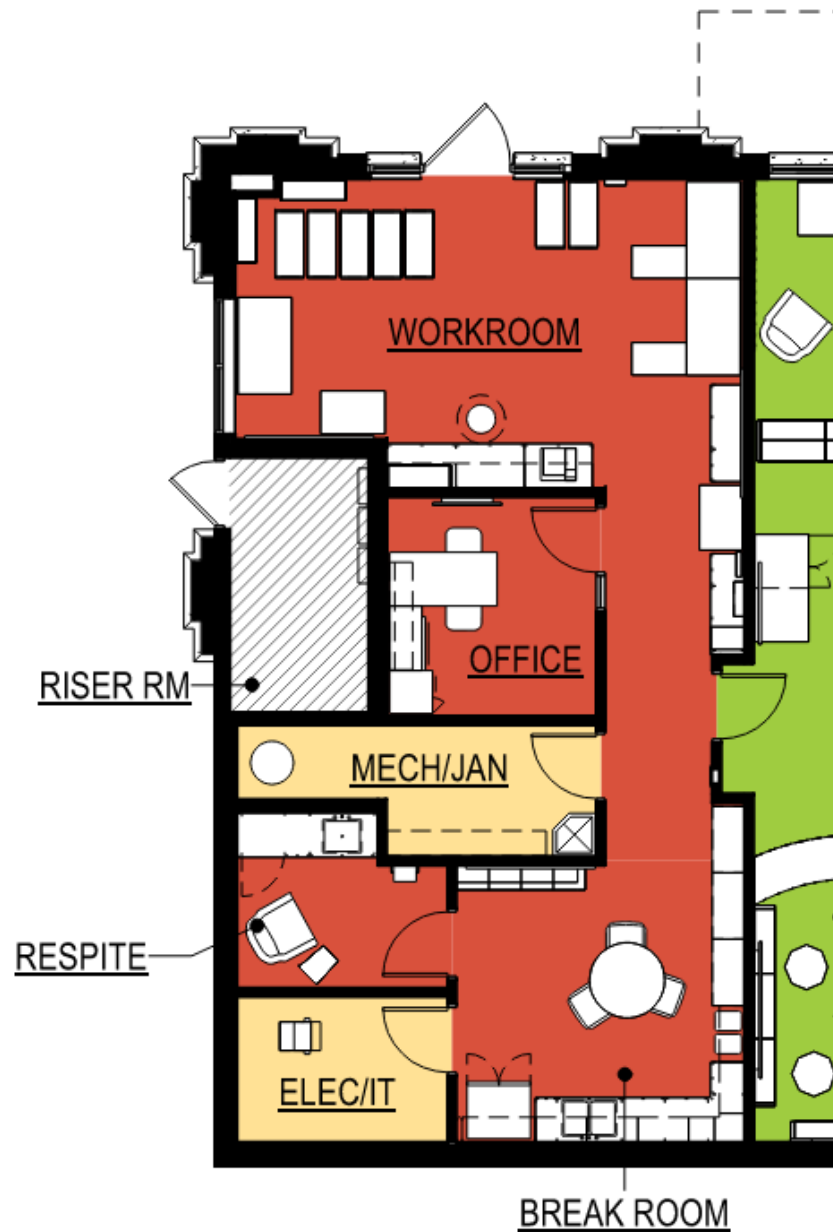
- Large glass entry to the meeting room to provide visual access from main library space, welcoming people to use the meeting room.



3 | COMMUNITY ROOM

HIGHLIGHTS

- Dedicated Exterior Entry
- Office
- Workroom for staff members
- Break Room
- Respite Room
- Suite Utilities
 - Mechanical / Janitorial Storage
 - Electrical / IT Room



4 | STAFF WORK AREAS



QUESTIONS?



Jefferson County
PUBLIC LIBRARY



THANK YOU!!