

AGES 3-11

Summer Challenge

WHERE

ADVENTURE

BEGINS!

My name is _____ and I'm ready for adventure!

Discover a new adventure with Jefferson County Public Library's Summer Challenge, **Where Adventure Begins!** Delve into an exciting journey to earn points and win prizes. Take new quests through daring reads, discover sensational interests, write inspiring stories and find new ways to adventure!

SUGGESTED ACTIVITIES (25 POINTS EACH)

Read to a pet or your favorite stuffed animal.

Read a book outside (but not if it's raining!)

Learn how to say something in a new language using Mango Languages.

Unleash your creativity! Make a craft in a JCPL program.



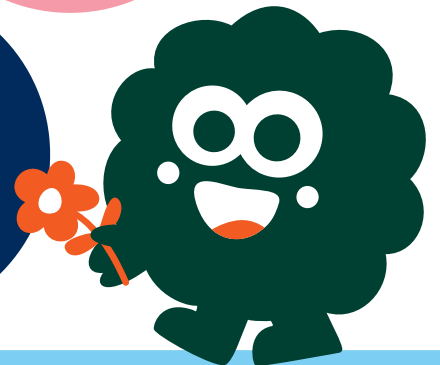
Sign up for 500 Books Before Middle School.

Download a digital audiobook or ebook.

Write your own comic book or check one out from JCPL.

Learn how to cook or bake something to share with your family.

Go on a picnic adventure!



Jefferson County
PUBLIC LIBRARY

Visit jeffcolibrary.org or the **Beanstack app** for more adventures!

READ. COMPLETE ACTIVITIES. WIN PRIZES!

START HERE!		
		HALFWAY THERE!
	YOU DID IT!	



Color in a square along your path every time you complete an activity or read.

And remember to track your points through jeffcolibrary.org or on the Beanstack app to earn some great prizes! (While supplies last.)

- Each activity is worth 25 points.
- You can repeat activities and get more points.
- Each minute of reading is worth 1 point.
- Choose your free book when you register!
- Complete the challenge with 500 points to receive your finisher prize: free entry to Downtown Aquarium and a custard from Freddy's.

ARE YOU UP FOR OUR SUPER CHALLENGE?

Every 500 points you earn after you finish the first 500 enters you into a drawing for an iPad!

BONUS!

The more points you earn, the closer we get to donating \$500 to Outdoor Lab! Outdoor Lab supports Jefferson County sixth-grade students in developing a passion for environmental awareness and conservation.



Outdoor Lab
FOUNDATION

THANK YOU TO OUR SPONSORS!

