

CREATE A LIVING LEGACY

BELMAR LIBRARY NAMING OPPORTUNITIES



DIRECT INQUIRES TO:

Jefferson County Library Foundation

10790 W. 50th Ave., Suite 200

Wheat Ridge, CO 80033

303.403.5075

jeffcolibraryfoundation.org



JEFFERSON COUNTY PUBLIC LIBRARY BELMAR NAMING OPPORTUNITIES



CREATE A LIVING LEGACY BY CONTRIBUTING TO BELMAR LIBRARY

Demonstrate your commitment to Jefferson County Public Library or honor a loved one's passion for public libraries.

Support programs and resources that help people improve their lives.

Add to the state-of-the-art Technology Access Center, keeping it aligned with the latest innovations.

Support positive community outcomes in literacy, education, workforce development, economic development, digital literacy and support for lifelong learning.

“The Belmar Library brings leading-edge library services to residents of Lakewood and surrounding communities. We have created an open and welcoming library, with an enhanced entry, intentional areas for kids, teens and adults, and innovative spaces to encourage community collaboration and engagement. We're excited about the recent changes and look forward to the ways the Library will evolve to meet future needs too”

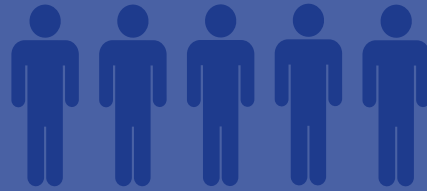
–Donna Walker, executive director, JCPL



BELMAR LIBRARY AT A GLANCE



**SERVICE AREA
POPULATION
136,239**



**504,033
VISITS**



**ITEMS BORROWED
994,352**



**1,423
LIBRARY
PROGRAMS**



**763
EARLY LITERACY
STORY TIMES**



**660
OTHER PROGRAMS**



**SUMMER READING
PARTICIPANTS**

7,970

**36,475
PROGRAM
ATTENDEES**

**22,986
STORY TIME
PARTICIPANTS**

**13,489
OTHER PROGRAMS
PARTICIPANTS**



**5,831
STUDY ROOM USE**



**1,258
MEETING ROOM USE**

*Based on 2018 Statistics

SUGGESTED NAMING OPPORTUNITIES

Naming opportunities are offered in conjunction with the Library's facilities update cycle (generally every ten years), with first right of renewal. They are recognized with prominently displayed signage on selected rooms/locations, and in the Library's and Library Foundation's annual reports, websites, and social media channels.

GIFTS OF \$5,000 - \$50,000

\$50,000

Children's Area

A 4,300-square-foot children's area where kids and families can develop early literacy skills in a fun and friendly environment.

\$25,000

Meeting Room

A 2,150-square-foot area to use as a community meeting room. This flexible area can be closed off to create two smaller meeting rooms as needed.

Family Place™

Based on a model of comprehensive services, a Family Place Library is a Center for neighborhood information, parent education, early literacy, socialization and family support.

DONATED BY
GENESEE MOUNTAIN
FOUNDATION

Story Time Area

A Story Time space where children 0-5 can learn the skills they need to be ready to read when they enter kindergarten.

Reading Area

An 1,100-square-foot designated quiet area for reading, study and reflection. This featured area includes a wall of windows overlooking Belmar Park.



\$20,000

Teen Area

A designated 600-square-foot teen area with access to age-appropriate resources and collaborative technology.

Technology Access Center

A designated 1,200-square-foot area with access to adult public computers, laptops, software, and the internet, as well as technology and tools to support business processes (printing, copying, scanning and faxing).

\$15,000

Digital Media Studio

An innovative audio recording studio, the first of its kind at Jefferson County Public Library.

\$10,000

Art Wall

A wall where community members can display their art.

Laptops for checkout

Laptop computers that patrons can access and use whenever they're in the Library.

\$7,500

Large Study Room

A private study area with collaborative technology for up to eight people.

**DONATED BY VICKI PONCE
in recognition of Belmar Library
Gift Shop Volunteers**

\$6,000

Medium Study Room

A private study area with collaborative technology for up to four people.

\$5,000

Small Study Room(s)

A private study area with collaborative technology for one - two people.

Small Study Room

A private study area with collaborative technology for one - two people.

**DONATED BY
BANK OF COLORADO**



WISH LIST OPPORTUNITIES

These amenities can only be built if we receive donations to support them.

\$100,000

**Discover Together:
Outdoor Adventure Space**

An outdoor, exploratory environment where children and families can engage in unstructured play.

\$55,000

Outdoor Picnic Space

An area for the community to relax and enjoy the outdoors.

\$160,000

Reading Deck(s)

Reading areas on outdoor decks overlooking Belmar Park.

\$25,000

Reading Room Fireplace

An added feature to the existing reading room, creating a cozy and inviting place when the weather outside may not be.

BELMAR LIBRARY FLOOR PLAN

- 1 Children's Area
- 2 Meeting Room
- 3 Family Place™*
- 4 Story Time Area
- 5 Reading Area
- 6 Teen Area
- 7 Technology Access Center
- 8 Art Wall
- 9 Large Study Room*
- 10 Medium Study Room
- 11 Small Study Room(s)
- 12 Digital Media Studio

WISH LIST OPPORTUNITIES

- 13 Outdoor Adventure Space
- 14 Picnic Area
- 15 Outdoor Reading Deck(s)
- 16 Reading Room Fireplace

*Opportunities already named.





SUGGESTED NAME RECOGNITION OPPORTUNITIES

Name recognition opportunities are offered for three years or the useful life of the asset (whichever comes first) with first right of renewal. They are recognized with signage affixed to the asset and in the Library's and Library Foundation's annual reports, websites and social media channels.

GIFTS OF \$1,000 - \$5,000

\$5,000

Audio Visual Support for Children's Area

A display monitor and system to support Story Time and other promotional efforts.

DONATED BY
MELVIN & ELAINE WOLF
FOUNDATION, INC.

Collaborative Technology for Study Room(s)

Display monitors and systems to support collaborative learning.



\$1,000

Public Access Computer(s)

Public access computers for patron use in the adult and teen areas.

AWE Children's Computer(s)

Early Literacy work stations in the children's area to promote online access to engaging educational content for our youngest patrons.

Service Kiosk(s)

Self-service kiosks that allow patrons to check out of Library materials.

DONATED BY
RACHELLE NAISHTUT

Bike Rack(s)

Secure bike racks outside the entrance to the Library.

DONATED BY
FRANSEN PITTMAN
GENERAL CONTRACTORS

Bench(es)

Convenient resting places outside the entrance to the Library.

INDIVIDUAL DONATIONS

Individual donations are always welcome. Donations ranging from \$100 to \$999 will be recognized on the Belmar Library's donor sign and in the Library's and Library Foundation's annual reports.

Donations are available online at: bit.ly/JCLF-Belmar

Select Belmar from the drop-down menu under "Where do you want your donation directed?"

Naming opportunities are governed by Jefferson County Public Library policies and guidelines, subject to approval from the Library Board of Trustees and administered through the Jefferson County Library Foundation. All contributions are tax deductible. For additional information, contact Jo Schantz at 303.403.5075.

SUPPORT EARLY LEARNING



The new Belmar Library Children's Area is a sanctuary for children and their families, offering a safe and engaging place for families to connect, discover and create. Designed to promote early learning and staffed with early learning professionals, it includes a Story Time area and a designated Family Place™ where parents and caregivers can bring their children to get the best possible start in life.

\$25,000

FAMILY PLACE™ LIBRARY

The Belmar Family Place™ Library is a place where the whole family to build good health and early learning, where parental involvement and supportive communities play a critical role in getting kids ready for success.

DONATED BY
GENESEE MOUNTAIN
FOUNDATION

\$25,000

STORY TIME AREA

The Belmar Library hosts more than 760 Story Times every year. These programs are designed to help our youngest residents, ages 0-5, gain the skills they need to be ready to read. We also help parents and caregivers learn how to reinforce important early learning skills at home. And we do it in an atmosphere of fun and learning. Be ready. It's likely there will be dancing!



“A library outranks any other one thing a community can do to benefit its children. It is a never failing spring in the desert.”

—Andrew Carnegie

SUPPORT DIGITAL LITERACY

Research tells us that nearly 30 percent of residents in the Belmar Library service area don't have access to the internet at home. The Belmar redesign includes state-of-the-art technology, including a new Technology Access Center and a forthcoming digital media room. Collaborative technology in meeting and study rooms and technology in teen and children's areas offer additional access to digital tools.

\$20,000

TECHNOLOGY ACCESS CENTER

A designated 1,200-square-foot area with access to adult public computers, laptops, software, and the internet, as well as technology and tools to support business processes (printing, copying, scanning and faxing).

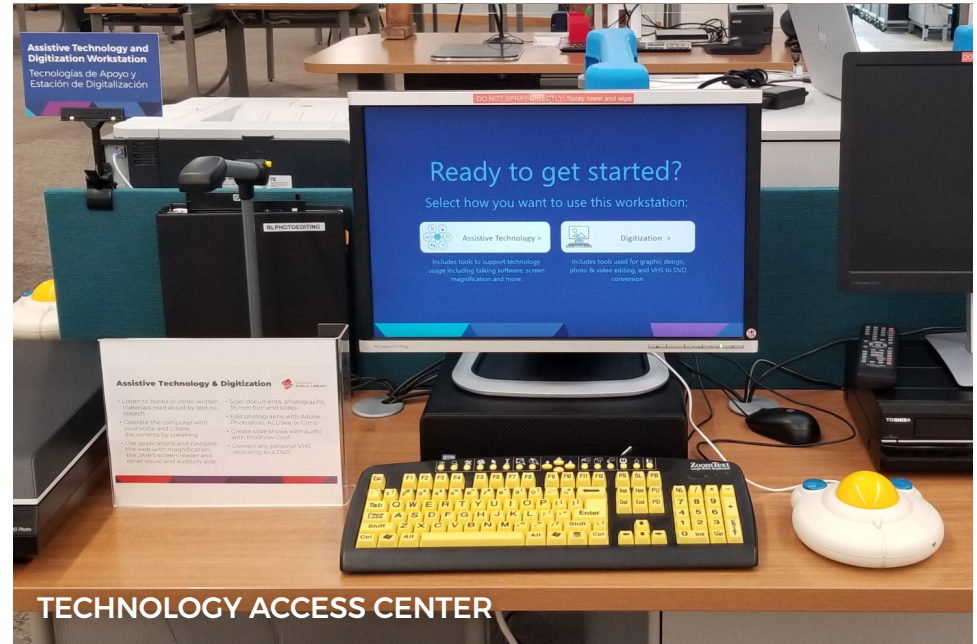
\$15,000

DIGITAL MEDIA STUDIO

A private room with technology to support audio recording, editing and podcasting.

“Today, digital literacy is not a privilege or just a convenience – it’s an expected and often required part of being a productive and responsible citizen. By inviting more people to become digitally literate, we can improve our own future in the way basic literacy improved societies in the past.”

–CommonCraft



TECHNOLOGY ACCESS CENTER



SUPPORT LIFELONG LEARNING



Learning isn't confined to just classrooms. Belmar Library is the perfect place to pursue individual interests and aspirations. We have resources for everyone, from newborns and their parents, to readers and seekers, students and researchers, makers and creators, job seekers and entrepreneurs, teens and senior citizens, and everyone in between. Whether you're checking out graphic novels in the Teen Area, browsing the stacks, or pursuing a passionate interest in the Reading Room, the Belmar Library has spaces and places just for you.

\$25,000

READING AREA

An 1,100-square-foot designated quiet area for reading, study and reflection. It includes a wall of windows overlooking Belmar Park.

\$20,000

TEEN AREA

A designated 600-square-foot area designed by and for teens, with access to age-appropriate resources and collaborative technology.



"Never lose a holy curiosity."

—Albert Einstein



SUPPORT COMMUNITY ENGAGEMENT



In community input sessions, residents told us they want the Library to be more than just a collection of physical and digital resources. They're looking for a trusted, welcoming space where community members can connect and engage. This redesign provides dedicated spaces where community members can come together. We've expanded the community meeting room and created flexibility to use the entire space for large meetings, or divide the space to accommodate smaller groups. We'll have an art wall, where local artists can display their works. We've also increased the number of study rooms from three to five.

\$25,000



MEETING ROOM

A new, 2,150-square-foot community meeting room that can accommodate up to 144 people or be closed off to create two smaller meeting rooms as needed.

\$10,000

ART WALL

A display area right inside the front entrance where local artists can showcase their work.

\$5,000 - \$7,500



STUDY ROOMS

Five private study rooms of various sizes that can accommodate two to eight people and include collaborative technology, allowing patrons to meet together and collaborate on projects.

“Public libraries have an important role to play in our municipalities, by addressing social isolation, bringing together people from every section of the community, and being a safe place where everyone is welcome.”

—Rosalie Grillis

Community Support Coordinator, Cape Breton Regional Library

PROVIDE ACCESS TO NATURE

One of the goals of the Belmar redesign is to create intentional connections between the Library and the outdoors. Research suggests that nature is good for us and has both mental and physical health benefits. If you've used the Reading Room at the Belmar Library, you may have experienced the calming effect of the beautiful views of Belmar Park outside the Library. We also have long-term plans to create easily accessible outdoor spaces, where patrons can read, play, daydream and collaborate in the outdoors. These spaces are wish-list items, meaning we can't afford to do them now, unless someone steps up to support them. The following naming opportunities have the potential to greatly enhance our patrons' experiences at the Belmar Library.

\$100,000

DISCOVER TOGETHER: OUTDOOR ADVENTURE SPACE

We know that unstructured play helps children develop gross and fine motor skills, creativity and socialization. Offering these activities outside also encourages exercise and contributes to emotional and physical health. This space would provide an outdoor, exploratory environment where children and families can engage in unstructured play.

\$55,000

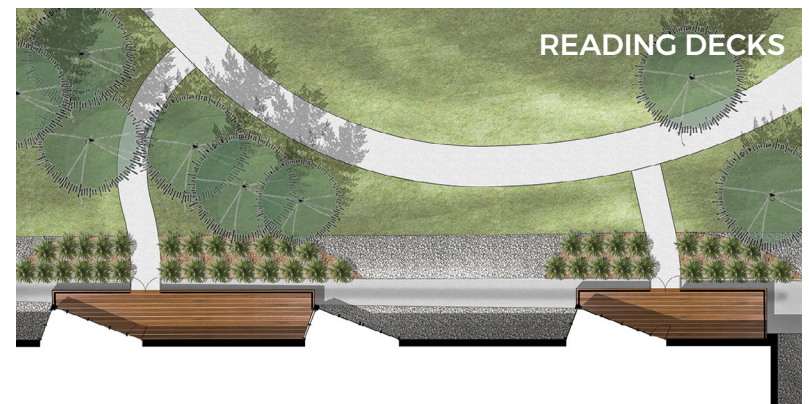
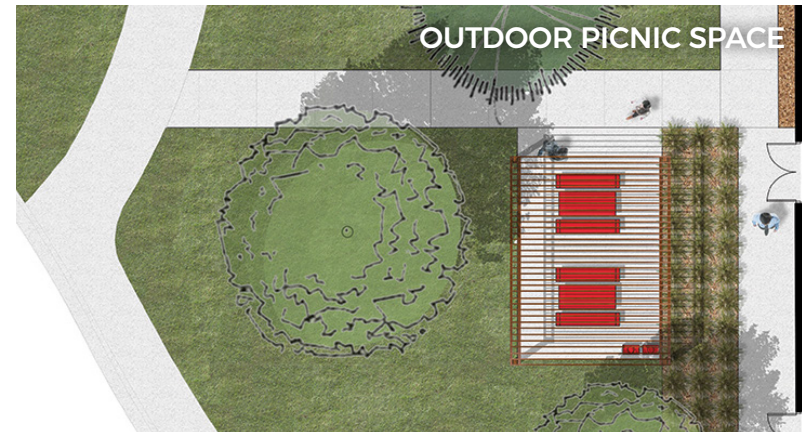
OUTDOOR PICNIC SPACE

We also hope to develop a picnic area outside the southwest corner of the Library, where patrons and staff can relax and enjoy the outdoors.

\$160,000

READING DECK(S)

We'd love to provide outdoor reading areas on decks overlooking Belmar Park.



"The health of the eye seems to demand a horizon.
We are never tired, so long as we can see far enough."

—Ralph Waldo Emerson



JOIN US IN CREATING A **LIVING LEGACY.**

Jeffcolibrary.org



Jefferson County
PUBLIC LIBRARY